

## Anti- $\beta$ -Actin Data Sheet

### Catalog No. | Description

L002 | Anti- $\beta$ -Actin (BA3R) Loading Control Monoclonal Antibody

### Clonality | Host Species | Isotype

BA3R | Mouse | IgG2b

### Immunogen

$\beta$ -Actin N-terminal peptide-KLH conjugates.

### Specificity

Recognizes native and denatured forms of  $\beta$ -Actin (~42kDa).

### Cross Reactivity

$\beta$ -Actin from human, mouse, rat, rabbit, and chicken.  $\beta$ -Actin from other species may also be detectable.

### Purification

Protein A affinity chromatography from mouse ascites fluid.

### Application

Dot, ELISA, IS, WB.

### Form

Liquid: 1mg/mL in 10mM PBS, pH 7.2, with 0.05% NaN<sub>3</sub>.

Lyophilized: 1mg/mL lyophilized in 10mM PBS, pH 7.2, with 1% BSA and 0.05% NaN<sub>3</sub>.

### Working Condition

WB (with ECL): 1:1000-5000 dilution (incubate for 1 hour at room temperature).

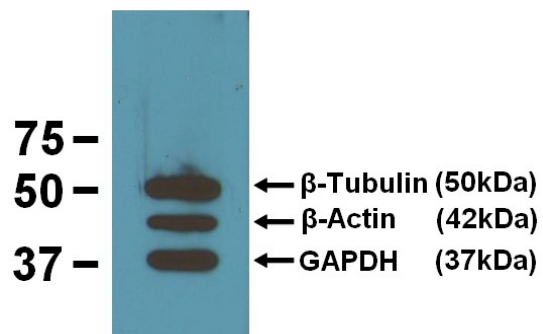
For best results with other assays (e.g.: Dot, ELISA, IS, etc), please determine optimal working dilution by titration test.

### Storage

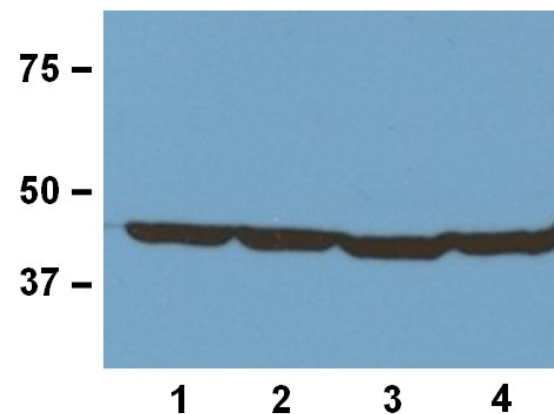
Liquid: Store at -20°C for 2 years or more. Centrifuge after first thaw to maximize product recovery. Aliquot to avoid repeated freeze-thaw cycles. Store aliquots at 4°C for several days to weeks.

Lyophilized: Store at -20°C for 3 years or more. Reconstitute with distilled water to desired concentration before use. Aliquot to avoid repeated freeze-thaw cycles. Store aliquots at 4°C for several days to weeks.

## Images



**Fig. 01** EBI's three loading control mAbs reacting against 10 $\mu$ g/lane of mouse brain tissue lysates. 50kDa band is Anti- $\beta$ -Tubulin (BT7R) at 1:2000 dilution (0.5 $\mu$ g/mL); 42kDa band is Anti- $\beta$ -Actin (BA3R) at 1:1000 dilution (1 $\mu$ g/mL); 37kDa band is Anti-GAPDH (GA1R) at 1:5000 dilution (0.2 $\mu$ g/mL).



**Fig. 02** 1:1000 (1 $\mu$ g/mL) Ab dilution used in WB of 20 $\mu$ g/lane tissue lysates from human (1), mouse (2), rat (3), and rabbit (4).

For *in vitro* research use only



[epitopebio.ca](http://epitopebio.ca)