



## Anti- $\beta$ -Tubulin Data Sheet

### Catalog No. | Description

L003 | Anti- $\beta$ -Tubulin (BT7R) Loading Control Monoclonal Antibody

### Clonality | Host Species | Isotype

BT7R | Mouse | IgG2a

### Immunogen

$\beta$ -Tubulin N-terminal peptide-KLH conjugates.

### Specificity

Recognizes native and denatured forms of  $\beta$ -Tubulin (~50kDa).

### Cross Reactivity

$\beta$ -Tubulin from human, monkey, mouse, rat, rabbit, chicken.  
 $\beta$ -Tubulin from other species may also be detectable.

### Purification

Protein A affinity chromatography from mouse ascites fluid.

### Application

Dot, ELISA, IS, WB.

### Form

Liquid: 1mg/mL in 10mM PBS, pH 7.2, with 0.05% NaN<sub>3</sub>.

Lyophilized: 1mg/mL lyophilized in 10mM PBS, pH 7.2, with 1% BSA and 0.05% NaN<sub>3</sub>.

### Working Condition

WB (with ECL): 1:2000-5000 dilution (incubate for 1 hour at room temperature).

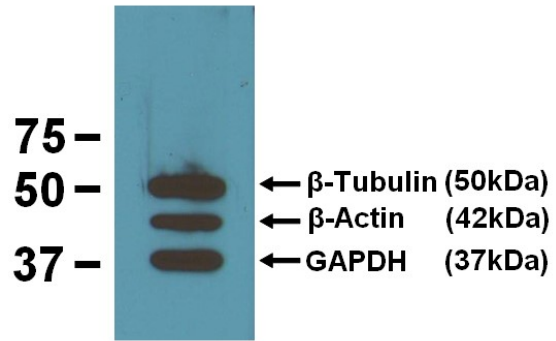
For best results with other assays (e.g.: Dot, ELISA, IS, etc), please determine optimal working dilution by titration test.

### Storage

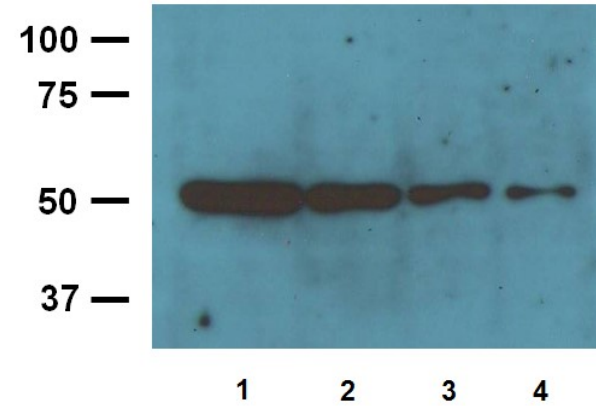
Liquid: Store at -20°C for 2 years or more. Centrifuge after first thaw to maximize product recovery. Aliquot to avoid repeated freeze-thaw cycles. Store aliquots at 4°C for several days to weeks.

Lyophilized: Store at -20°C for 3 years or more. Reconstitute with distilled water to desired concentration before use. Aliquot to avoid repeated freeze-thaw cycles. Store aliquots at 4°C for several days to weeks.

Images

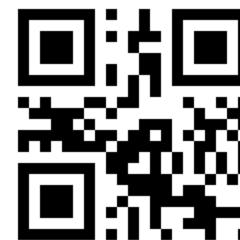


**Fig. 01** EBI's three loading control mAbs reacting against 10 $\mu$ g/lane of mouse brain tissue lysates. 50kDa band is Anti- $\beta$ -Tubulin (BT7R) at 1:2000 dilution (0.5 $\mu$ g/mL); 42kDa band is Anti- $\beta$ -Actin (BA3R) at 1:1000 dilution (1 $\mu$ g/mL); 37kDa band is Anti-GAPDH (GA1R) at 1:5000 dilution (0.2 $\mu$ g/mL).



**Fig. 02** 1:4000 (0.25 $\mu$ g/mL) Ab dilution used in WB of 10 $\mu$ g/lane (1), 5 $\mu$ g/lane (2), 2.5 $\mu$ g/lane (3) and 1.25 $\mu$ g/lane (4) mouse brain tissue lysates.

For *in vitro* research use only



[epitopebio.ca](http://epitopebio.ca)