

Anti-ERK1 Data Sheet

(Extracellular Signal-Regulated Kinase)

Catalog No. | Description

S002 | Anti-ERK1 (E19) Signal Transduction Monoclonal Antibody

Clonality | Host Species | Isotype

E19 | Mouse | IgG1

Immunogen

Recombinant full length ERK1 protein.

Specificity

Recognizes only the ERK1 protein (e.g.: from human and mouse cells).

Cross Reactivity

WB: ERK1 from human and mouse cells. IP: ERK1 from human cells. ERK1 from other species may also be detectable.

Purification

Protein A affinity chromatography from mouse ascites fluid.

Applications

IP, WB.

Form

Liquid: 1mg/mL in 10mM PBS, pH 7.2, with 0.05% NaN₃.

Lyophilized: 1mg/mL lyophilized in 10mM PBS, pH 7.2, with 1% BSA and 0.05% NaN₃.

Working Conditions

WB (with ECL): 1:1000-10,000 dilution (incubate for one hour at room temperature).

IP: 1:50-200 dilution.

For best results with other assays (e.g.: IP, etc), please determine optimal working dilution by titration test.

Storage

Liquid: Store at -20°C for 2 years or more. Centrifuge after first thaw to maximize product recovery. Aliquot to avoid repeated freeze-thaw cycles. Store aliquots at 4°C for several days to weeks.

Lyophilized: Store at -20°C for 3 years or more. Reconstitute with distilled water to desired concentration before use. Aliquot to avoid repeated freeze-thaw cycles. Store aliquots at 4°C for several days to weeks.

Images

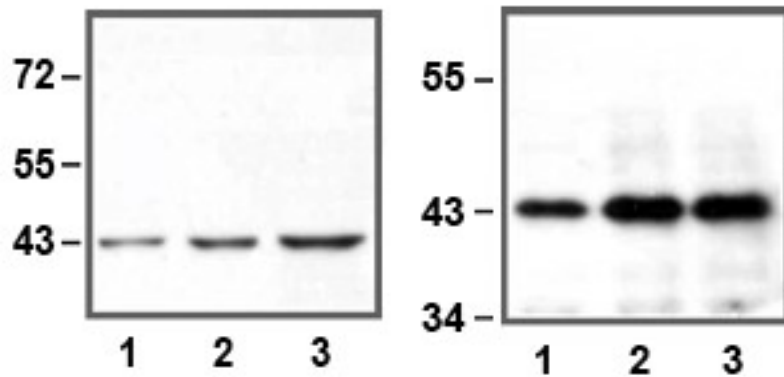


Fig. LEFT: 1:10,000 (0.1 μ g/mL) Ab dilution used in WB of HEK293 cell lysate; 1 μ g (1), 5 μ g (2), and 10 μ g (3) of cell lysate used; RIGHT: IP of anti-ERK1 using 50 μ g of Jurkat cell lysate; 0.5 μ g (1), 1 μ g (2), and 2 μ g (3) of anti-ERK1 used.

For in vitro research use only



epitopebio.ca