



Anti-His Tag Data Sheet

Catalog No. | Description

T001 | Anti-His Tag (HIS.H8) Monoclonal Antibody

Clonality | Host Species | Isotype

HIS.H8 | Mouse | IgG2b

Immunogen

HHHHHH (6x His) synthetic peptide conjugated to KLH.

Specificity

Recognizes the epitope of 6x His-tags encoded by many commercially available vectors, regardless of the tag's location in the fusion protein sequences (i.e.: reacts with N-terminal, C-terminal or internal 6x His-tags).

Purification

Protein A affinity chromatography from mouse ascites fluid.

Applications

Dot, ELISA, IP, IS, WB.

Sensitivity

WB (with ECL): 1-2ng of His-tagged fusion proteins.

Form

Liquid: 1mg/mL in 10mM PBS, pH 7.2, with 0.05% NaN₃.

Lyophilized: 1mg/mL lyophilized in 10mM PBS, pH 7.2, with 1% BSA and 0.05% NaN₃.

Working Conditions

WB (with ECL): 1:1000-3000 dilution (incubate for one hour at room temperature).

IP: 1:50-200 dilution.

IS: 1:500-2000 dilution.

For best results with other assays (e.g.: Dot, ELISA, etc), please determine optimal working dilution by titration test.

Storage

Liquid: Store at -20°C for 2 years or more. Centrifuge after first thaw to maximize product recovery. Aliquot to avoid repeated freeze-thaw cycles. Store aliquots at 4°C for several days to weeks.

Lyophilized: Store at -20°C for 3 years or more. Reconstitute with distilled water to desired concentration before use. Aliquot to avoid repeated freeze-thaw cycles. Store aliquots at 4°C for several days to weeks.

Images

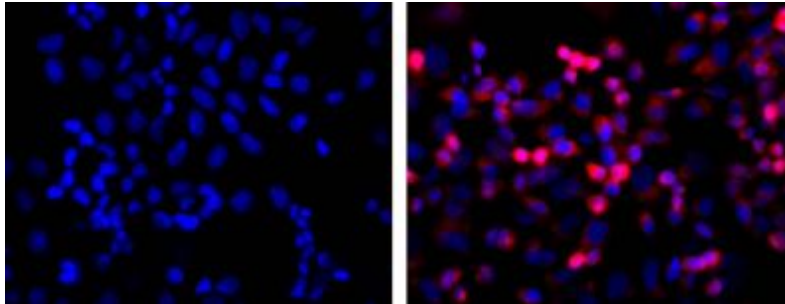


Fig. 01 LEFT: untransfected control; RIGHT: anti-His (in red) on His-tagged fusion proteins in HEK293 cells. Both counterstained with DAPI (in blue).

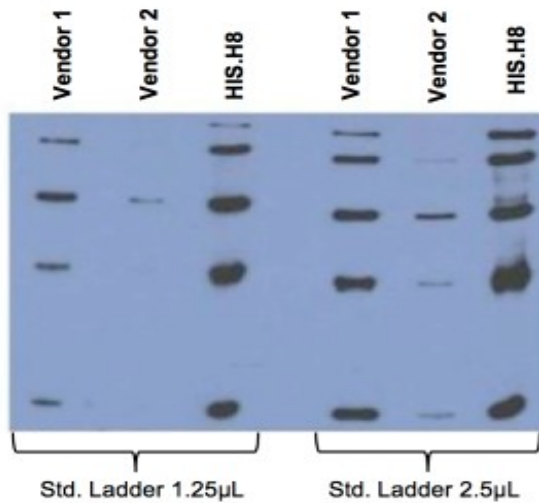


Fig. 02 Comparison between anti-His tag (HIS.H8) mAb with 2 different vendor Abs, probed against a standard ladder (Qiagen

Cat. No. 34705) containing five different His-tagged proteins. All Ab dilutions are 1:2000 (0.5µg/mL).

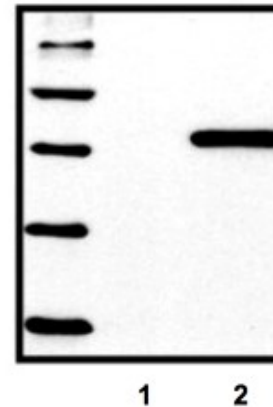


Fig. 03 Standard ladder containing five different His-tagged proteins; untransfected control (1), HEK293 cells transfected with His-tagged protein vector (2).

For *in vitro* research use only



epitopebio.ca