



Anti-RFP Tag Data Sheet

(Red Fluorescent Protein)

Catalog No. | Description

T008 | Anti-RFP Tag (RF5R) Monoclonal Antibody

Clonality | Host Species | Isotype

RF5R | Mouse | IgG1

Immunogen

RFP from the *Discosoma sp.* (sea anemone) N-terminal peptide-KLH conjugates.

Specificity

Recognizes native and denatured forms of RFP and its variants: TagRFP, TurboRFP, dsRed, mCherry, mOrange, tdTomato, etc.

Purification

Protein A affinity chromatography from mouse ascites fluid.

Application

Dot, ELISA, IP, IS, WB.

Sensitivity

WB (with ECL): 1-10ng of purified RFP or RFP fusion proteins.

Form

Liquid: 1mg/mL in 10mM PBS, pH 7.2, with 0.05% NaN₃.

Lyophilized: 1mg/mL lyophilized in 10mM PBS, pH 7.2, with 1% BSA and 0.05% NaN₃.

Working Condition

WB (with ECL): 1:1000-3000 dilution (incubate for 1 hour at room temperature).

IP: 1:50-200 dilution.

IS: 1:500-2000 dilution.

In order to obtain best results in other assays (e.g.: Dot, ELISA, etc), please determine optimal working dilution by titration test.

Storage

Liquid: Store at -20°C for 2 years or more. Centrifuge after first thaw to maximize product recovery. Aliquot to avoid repeated freeze-thaw cycles. Store aliquots at 4°C for several days to weeks.

Lyophilized: Store at -20°C for 3 years or more. Reconstitute with distilled water to desired concentration before use. Aliquot to avoid repeated freeze-thaw cycles. Store aliquots at 4°C for several days to weeks.

Images

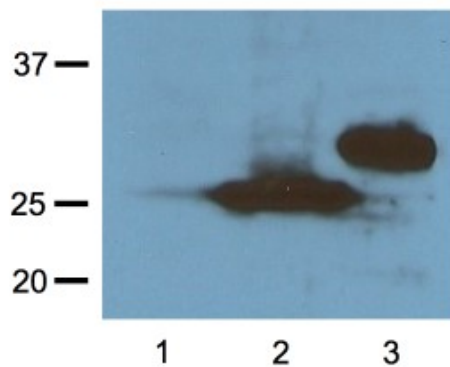


Fig. 1:1000 (1 μ g/mL) Ab dilution probed against HEK293 cells transfected with RFP vector; untransfected control (1), transfected with TurboRFP (2), and transfected with dsRed (3).

For *in vitro* research use only



epitopebio.ca